

# INDEX

- ❖ Plastic Seal
- ❖ Cable Seal
- ❖ Bolt Seal
- ❖ Metal Seal
- ❖ Pad Lock Seal
- ❖ Accessories

# Plastic Seal

Indicative plastic seals---the simplest type of seal, Shows whether your application has been tampered with, The primary application for fixed length seals is to secure vehicle doors during transit , but they are very versatile and suitable for a wide range of applications.

Model: **MT-WIPS280MM** or **WIPS 350MM**

SPECIFICATIONS: • Material: Polypropylene; Stainless steel metal

inserted locking mechanism.

• Dimensions :belt diameter 2.3 mm, label size: 16.7x46 mm,

Work length 204mm or 275.

• Strength >30kg

• Print Hot foil or laser Name/logo and serial number

• Color:

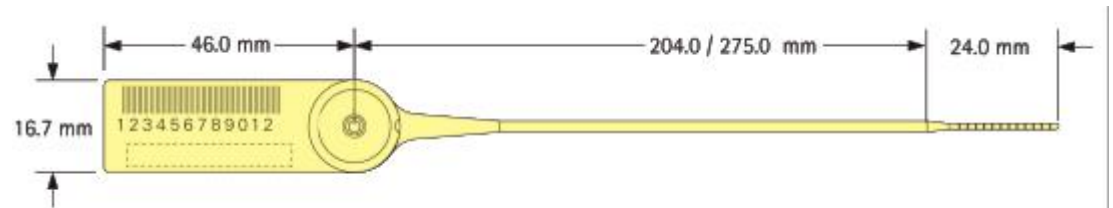
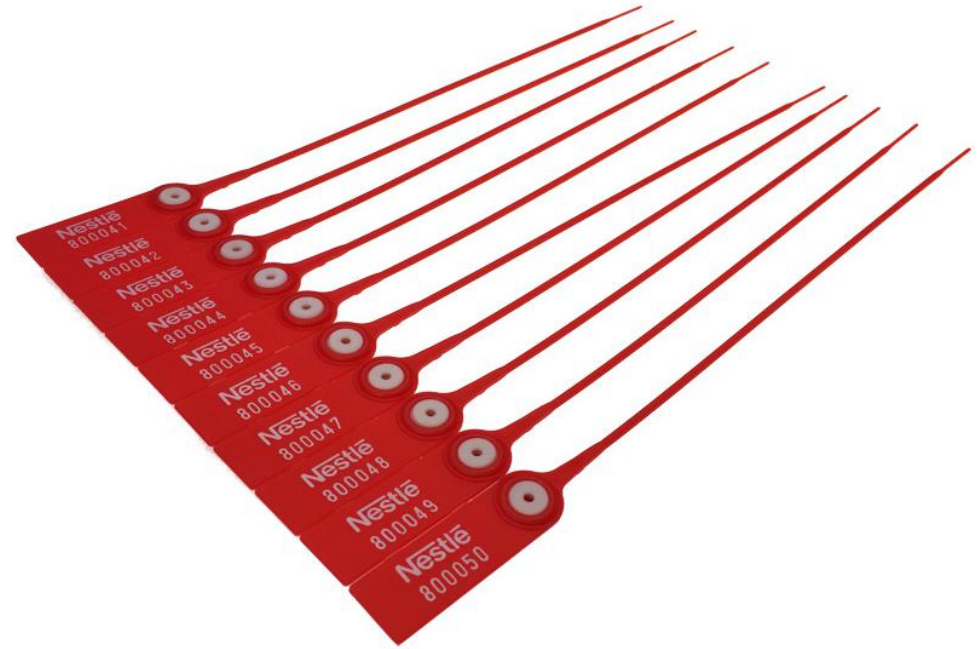


• Packaging: 2000pcs/Carton

• Carton Dimensions: 440X220X230mm

• G.W : 5KG


• N.W : 4.5KG

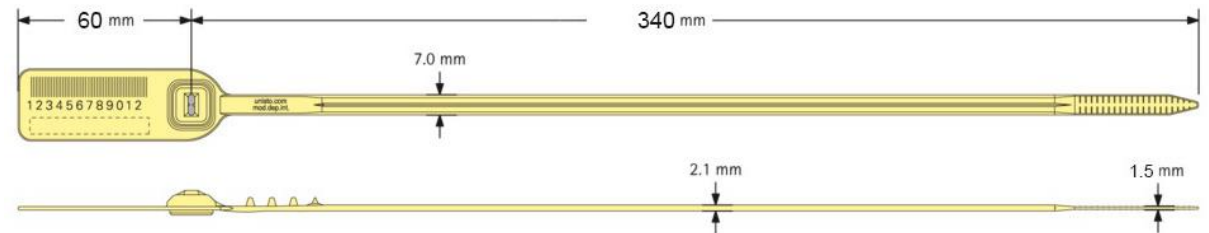


# Plastic Seal

Model: **NIPS400 MM**

## SPECIFICATIONS:


- Material: Polypropylene; Stainless steel metal inserted locking mechanism.
- Dimensions :belt width 7.0 mm, label size: 20x60 mm, work length 320mm
- Strength >50kg
- Print Hot foil or laser Name/logo and serial number
- Color 
- Packaging: 1000pcs/Carton
- Carton Dimensions: 415X130X450mm
- G.W : 6.5KG
- N.W : 6KG

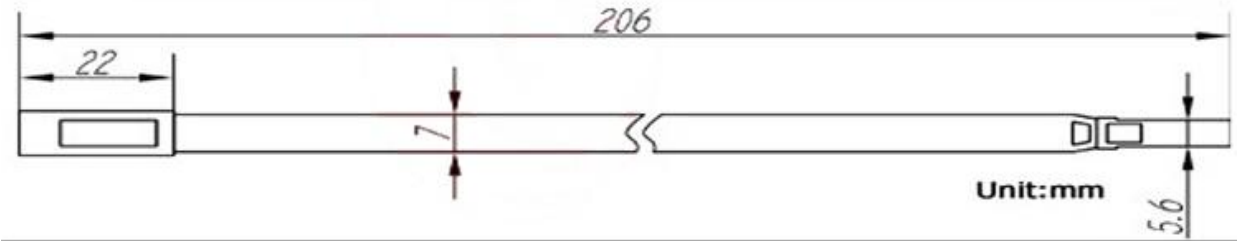
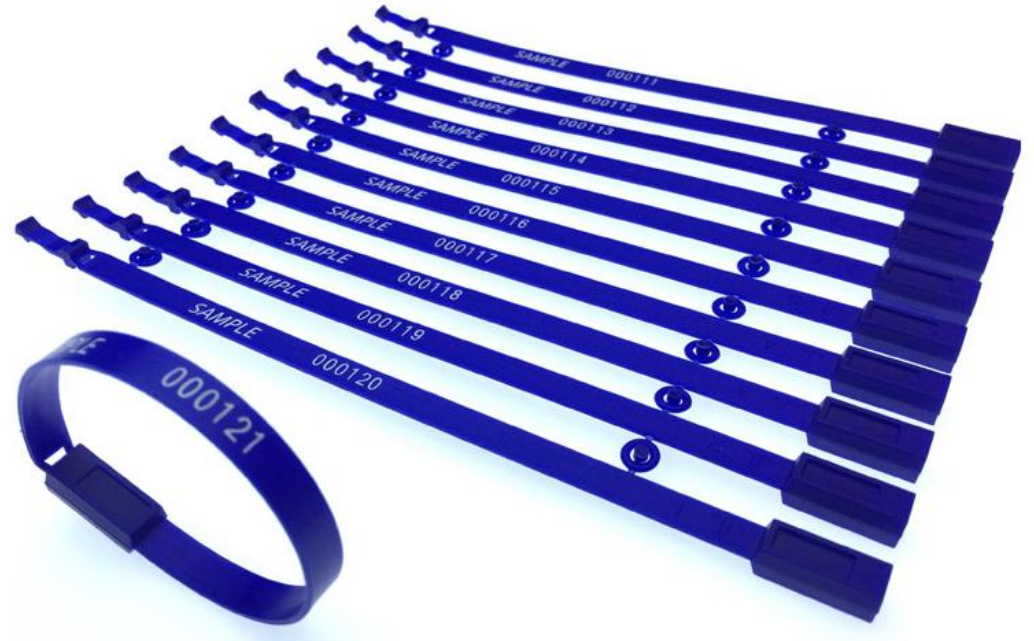


# Plastic Seal

Model: **FixLok 210MM**

## SPECIFICATIONS:


- Material: Polypropylene /Polyethylene
- Dimensions :belt width 7.0mm, work length 206mm
- Strength >30kg
- Print Hot foil or laser Name/logo and serial number
- Color 
- Packaging: 2000pcs/Carton
- Carton Dimensions: 380x225x380mm
- G.W : 7KG
- N.W : 6.5KG

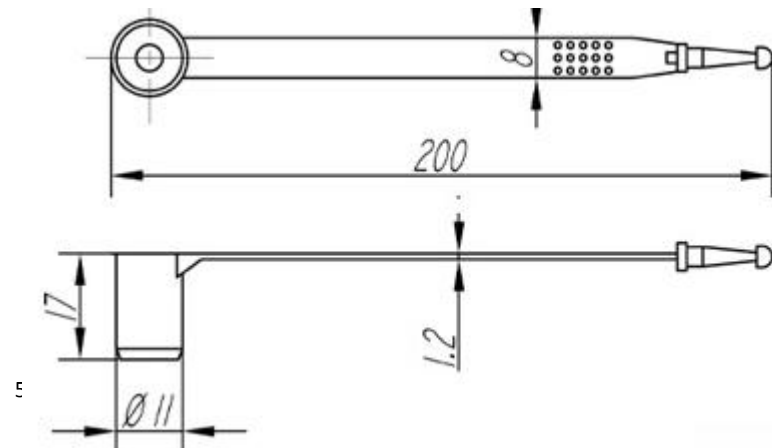
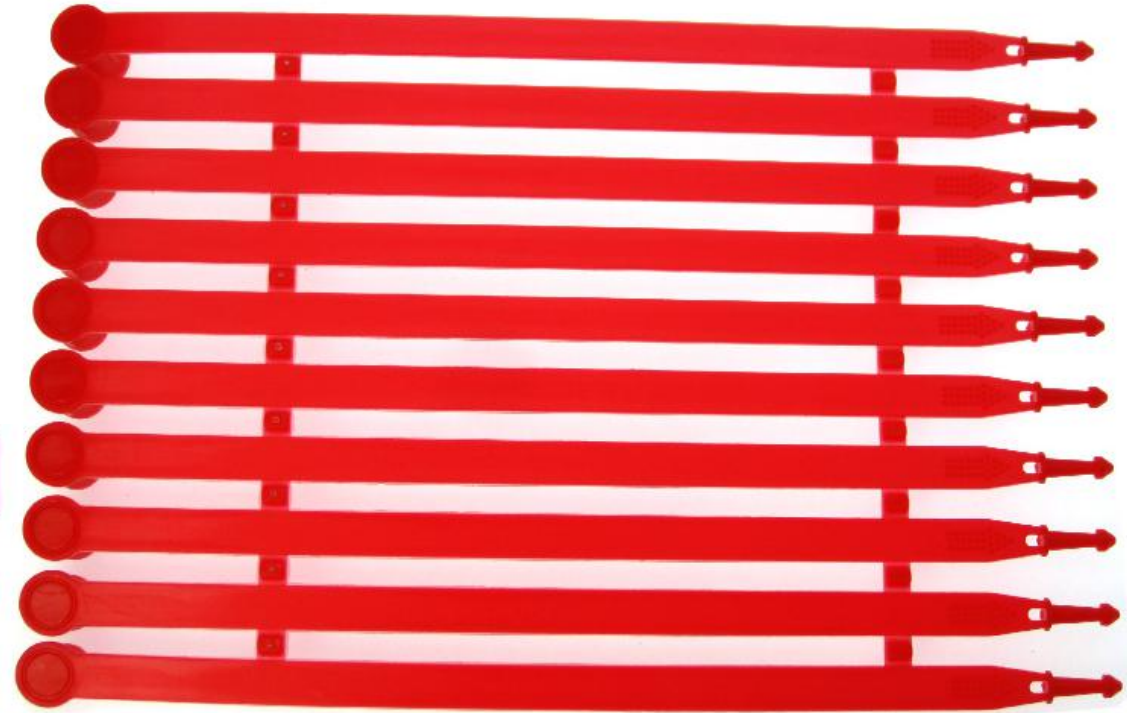


# Plastic Seal

Model: FixLok 200DL

## SPECIFICATIONS:

- Material: Polypropylene /Polyethylene
- Dimensions :belt width 9.0mm, ; work length 210mm
- Strength >40kg
- Print Hot foil or laser Name/logo and serial number
- Color: 
- Packaging: 2500pcs/Carton
- Carton Dimensions: 325x290x340mm
- G.W : 11KG
- N.W : 10KG



Unit:mm

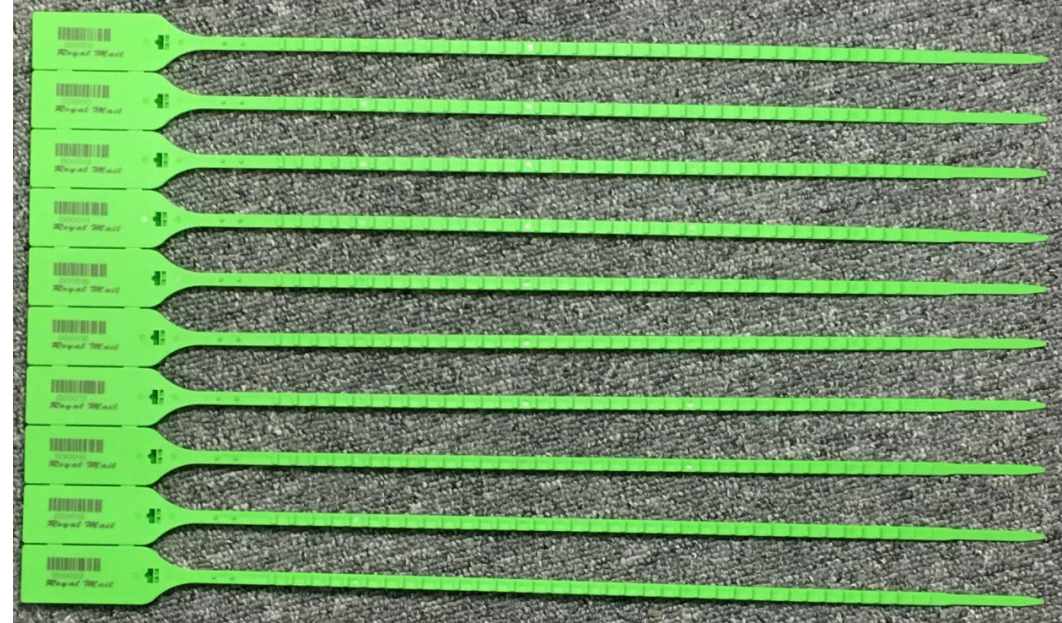
# Plastic Seal

Model: FlaLok 445MM

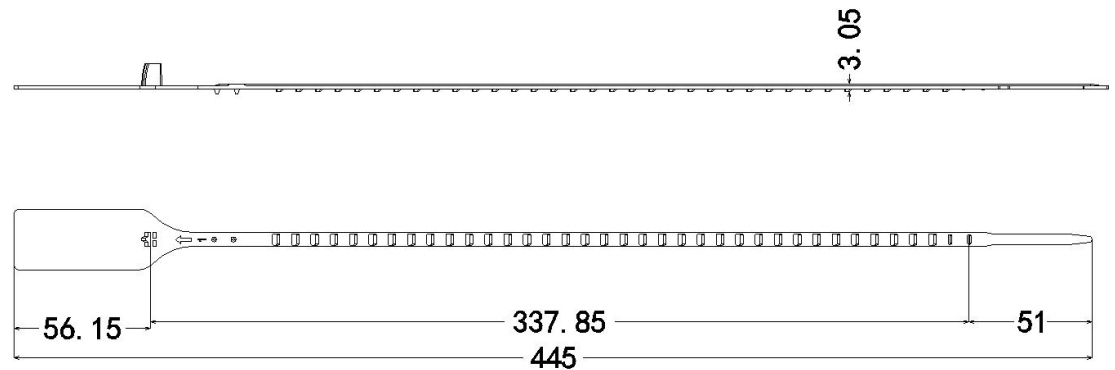
## SPECIFICATIONS:

- Material: Polypropylene /Polyethylene
- Dimensions :belt width 5.0mm, label size: 30x65mm;  
work length 360mm
- Strength >40kg
- Print Hot foil or laser Name/logo and serial number

• Color:



- Packaging: 2000pcs/Carton
- Carton Dimensions: 325x290x340mm
- G.W : 11KG
- N.W : 10KG



# Plastic Seal

Model: **FlaLok DL350MM**

## SPECIFICATIONS:

- Material: Polypropylene /Polyethylene
- Dimensions : belt width 7.0mm, label size: 70x25mm;

Work length 280mm

- Strength >40kg
- Print Hot foil or laser Name/logo and serial number

• Color



• Packaging: 2000pcs/Carton

• Carton Dimensions: 425x390x390mm

• G.W : 12KG

• N.W : 11KG



# Plastic Seal

Model: **FixLok 250**

## SPECIFICATIONS:

- Material: Polypropylene /Polyethylene
- Dimensions :Total length: 250mm, flag size: 40 mm X 20 mm
- Strength >10kg
- Print Hot foil or laser Name/logo and serial number

• Color



• Packaging

Standard Packaging: 10 pieces / mat - 5000 pieces/carton

Carton Dimensions: 21.26" X 16.54" X 10.63" (54cm X 42cm X 27cm)

Carton Weight: Gross: 10 kg / Net: 9.5 kg

- G.W : 16KG
- N.W : 15KG





# Plastic Seal

Model: **FlaLOCK 4000MM**

## SPECIFICATIONS:

- All plastic pull tight plastic seal, easy for recycling
- Materials: PP
- Designed with large marking area and label holder
- Total length: 405mm, flag size: 49 mm X 30 mm
- Node tail with size in 356mm X 3.8mm, operational length in 326mm
- Average tensile strength: 200N

## Packaging

- Standard Packaging: 10 pieces / mat - 2000 pieces/carton

- Carton Dimensions: 25.98" X 19.69" X 10.63" (66cm X 50cm X 27cm)
- Carton Weight: Gross: 10 kg / Net: 9.5 kg



# Plastic Seal

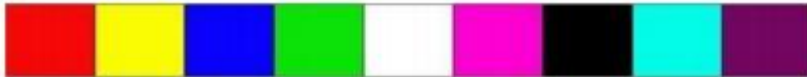
Model: **FlaLOCK 300MM**

- Materials: PP Designed with large marking area
- Total length: 300mm, flag size: 45 mm X 28 mm
- Node tail with size in 260 mm X 3.8 mm, operational length in 235mm
- Average tensile strength: 200N

## Customization Options

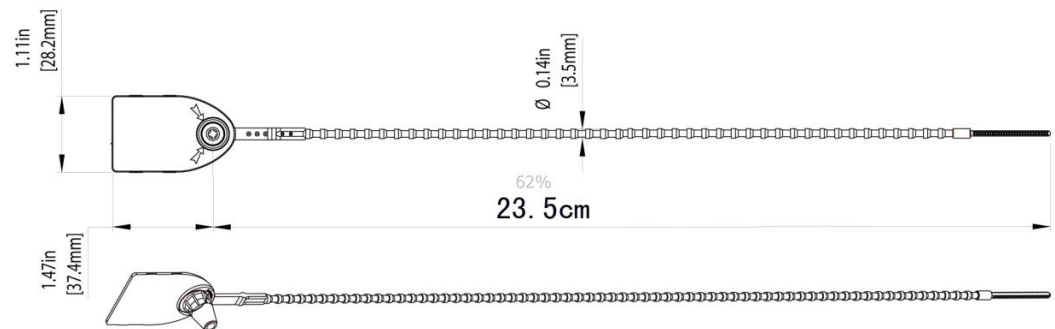
- Customer's name, sequential number Barcode (laser)

• Color



## Packaging

- Standard Packaging: 10 pieces / mat - 2500 pieces/carton
- Carton Dimensions: 23.62" X 12.99" X 11.02" (60cm X 33cm X 28cm)
- Carton Weight: Gross: 10.5 kg / Net: 10.0 kg




# Plastic Seal

Model: **FlaLOCK D300MM**

Model: **NIPS400 MM**

## SPECIFICATIONS:

- Material: Polypropylene; Stainless steel metal inserted locking mechanism.
- Dimensions :belt width 5.0 mm, label size:30x55 mm, work length 180mm
- Strength >40kg
- Print Hot foil or laser Name/logo and serial number
- Color 
- Packaging: 2000pcs/Carton
- Carton Dimensions: 415X130X450mm
- G.W : 11.5KG
- N.W : 10.5KG



Barrier Seal

# BOLT SEAL



Model: BS05

## SPECIFICATIONS:

- C-TPAT & ISO 17712:2013 complaint.
- Head diameter 19mm ,bush diameter 18.3mm match ISO17712:2013
- Average pull apart force is 1200KG.
- Carbon steel insert with zinc chromate finish ABS plastic body on locking case. • Customer name/logo can be printed.

• Color



- Shaft: 8.0mm X 82mm • Bush: 22mm X 36mm
- Packaging:200pcs/Carton
- Carton Dimensions: 250X250X180mm
- G.W : 18KG
- N.W : 17KG



# Bolt Seal

Model: BS06

## SPECIFICATIONS:

- C-TPAT & ISO 17712:2013 complaint.
- Head diameter 19mm ,bush diameter 18.3mm
- Average pull apart force is 1200KG.
- Carbon steel insert with zinc chromate finish ABSplastic body on locking case.
- Customer name/logo can be printed.

• Color



## DIMENSIONS

- Shaft: 8.0mm X 82mm • Bush: 22mm X 36mm

PACKING: • Packaging:200pcs/Carton

- Carton Dimensions: 250X250X180mm

• G.W : 18KG

• N.W : 17KG



# Bolt Seal

Model: GB002

## SPECIFICATIONS:

- C-TPAT & ISO 17712:2013 complaint.
- Head diameter 19mm ,bush diameter 18.3mm  
match ISO17712:2013
- Average pull apart force is 1200KG.
- Carbon steel insert with zinc chromate finish ABS plastic  
body on locking case. • Customer name/logo can be printed.
- Color 
- Shaft: 7.0mm X 82mm • Bush: 22mm X 36mm
- Packaging:250pcs/Carton
- Carton Dimensions: 410X320X160mm
- G.W : 19\*KG
- N.W : 18KG



# Bolt Seal

Model: **BS02**

## SPECIFICATIONS:

- C-TPAT & ISO 17712:2013 complaint.
- Head diameter 19mm ,bush diameter 18mm match ISO17712:2013
- Average pull apart force is 1200KG.
- Carbon steel insert with zinc chromate finish ABS

plastic body on locking case. • Customer name/logo can be printed.

• Color



- Shaft: 8.0mm X 82mm• Bush: 22mm X 36mm
- Packaging:250pcs/Carton
- Carton Dimensions: 450X370X190mm
- G.W : 20KG
- N.W : 19KG



# Bolt Seal

Model: **NEW-BS02**

## SPECIFICATIONS:

- C-TPAT & ISO 17712:2013 complaint.
- Head diameter 19mm ,bush diameter 18mm match ISO17712:2013
- Average pull apart force is 1200KG.
- Carbon steel insert with zinc chromate finish ABS plastic body on locking case.
- Customer name/logo can be printed.
- Color 
- Shaft: 8.0mm X 82mm• Bush: 22mm X 36mm
- Packaging:250pcs/Carton
- Carton Dimensions: 450X360X190mm
- G.W : 20KG
- N.W : 19KG






# Bolt Seal

Model: **GB004**

## SPECIFICATIONS:


- C-TPAT & ISO 17712:2013 complaint.
- Head diameter 19mm ,bush diameter 18mmmatch ISO17712:2013
- Average pull apart force is 1200KG.
- Carbon steel insert with zinc chromate finish ABSplastic body on locking case.
- Customer name/logo can be printed.
- Color 
- Shaft: 8.0mm X 82mm • Bush: 22mm X 36mm
- Packaging:250pcs/Carton
- Carton Dimensions: 450X360X190mm
- G.W : 20KG
- N.W : 19KG



# Bolt Seal

Model: **GB001**

## SPECIFICATIONS:


- C-TPAT & ISO 17712:2006 complaint.
- Average pull apart force is 1000KG.
- Carbon steel insert with zinc chromate finish ABS plastic body on locking case.
- Customer name/logo can be printed.
- Color 
- Shaft: 8.0mm X 72mm • Bush: 20mm X 36mm
- Packaging: 250pcs/Carton
- Carton Dimensions: 450X360X190mm
- G.W : 18KG
- N.W : 17KG



# Bolt Seal

Model: BS01

## SPECIFICATIONS:

- C-TPAT & ISO 17712:2013 complaint.
- Head diameter 19mm ,bush diameter 18mm match ISO17712:2013
- Average pull apart force is 1600KG.
- Carbon steel insert with zinc chromate finish ABS plastic body on locking case.
- Customer name/logo can be printed.
- Color 
- Shaft: 7.0mm X 84mm • Bush: 24mm X 36mm
- Packaging:250pcs/Carton
- Carton Dimensions: 390X260X190mm
- G.W : 22KG
- N.W : 21KG



# Cable Seal

Model:**C1.0**

## SPECIFICATIONS:

- C-TPAT & ISO 17712 complaint.
- Average pull apart force is 400KG. • Aluminum alloy housing body
- 1.0mm cable diameter • 7X7 galvanized steel aircraft cable
- Die casting aluminum lock body & lock system
- Customer name/logo can be printed.
- Color

## DIMENSIONS

- House:26mm X18mmX6mm
- Packaging:1000pcs/Carton
- Carton Dimensions: 250X250X130mm
- G.W : 13KG
- N.W : 12KG

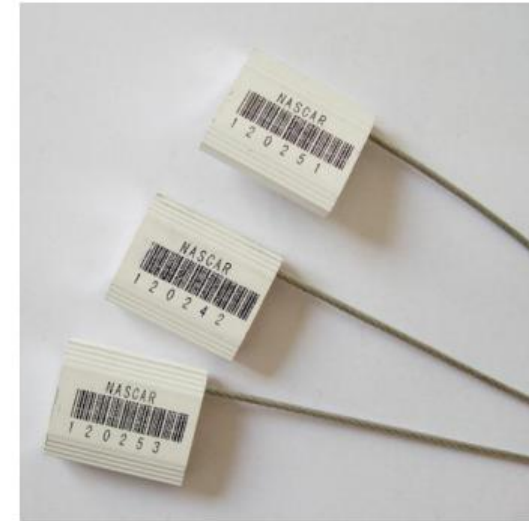
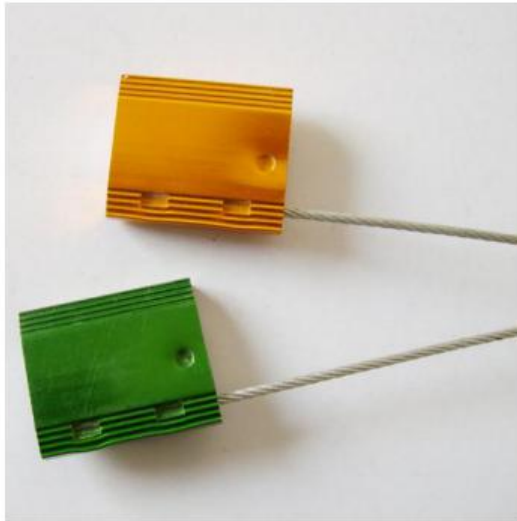


# Cable Seal-AluLok CB Series



Item	Locking house L x W x H	Cable length (mm)	Cable diameter (mm)	Strength (kg-f)	Packing	Mast cartons (mm)	Weight(kg)
CB1.5	26x22x6	250	1.5	>200kgf	500pcs/carton	250x250x100	9
CB2.0	26x22x6	250	1.8	>400kgf	500pcs/carton	250x250x120	10
CB2.5	26x22x8	250	2.5	>800kgf	500pcs/carton	250x250x150	13
CB3.5	26x22x8.5	250	3.5	>1300kgf	500pcs/carton	300x250x130	14
CB5.0	35x28x12	250	5.0	>1700kgf	200pcs/carton	300x250x150	22

# Cable Seal-AluLok701-1.5R



- Specification

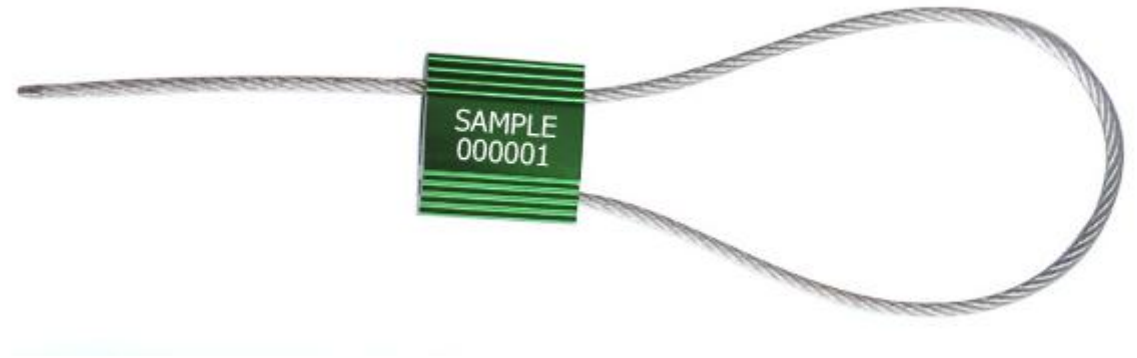
Item	Locking house L x W x H	Cable length (mm)	Cable diameter (mm)	Strength (kg-f)	Packing	Mast cartons (mm)	Weight(kg)
AluLok701-1.5R	26x22x6	250	1.5	>200kgf	500pcs/carton	250x250x100	9

## Cable Seal-AluLok702 Series



Item	Locking house L x W x H	Cable length (mm)	Cable diameter (mm)	Strength (kg-f)	Packing	Mast cartons (mm)	Weight(kg)
AluLok702-2.0	26x22x6	250	1.8	>400kgf	500pcs/carton	250x250x120	10
AluLok702-3.0	26x22x8	250	3.0	>800kgf	500pcs/carton	250x250x150	13
AluLok702-3.5	26x22x8.5	250	3.5	>1300kgf	500pcs/carton	300x250x130	14
AluLok715H	35x35x12	250	5.0	>1700kgf	200pcs/carton	300x250x150	19

## Cable Seal-AluLok703 Series



Item	Locking house L x W x H	Cable length (mm)	Cable diameter (mm)	Strength (kg-f)	Packing	Mast cartons (mm)	Weight(kg)
AluLok703-1.5	26x26x6	250	1.5	>200kgf	500pcs/carton	250x250x100	8
AluLok703-1.8	26x26x6	250	1.8	>400kgf	500pcs/carton	250x250x120	10
AluLok703-2.5	26x26x8	250	2.5	>800kgf	500pcs/carton	250x250x150	13
AluLok703-3.5	26x26x8.5	250	3.5	>1300kgf	500pcs/carton	300x250x130	14
AluLok718H	41x35x13	250	5.0	>1300kgf	200pcs/carton	300x250x150	21



# Cable Seal

Model: GS001

## SPECIFICATIONS:

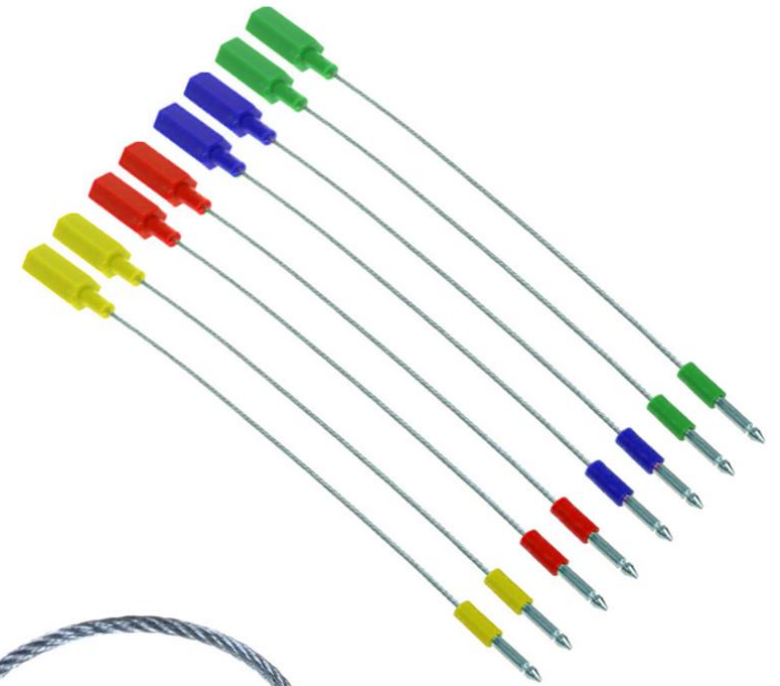
- ISO 17712 complaint; Each seal conforms to a fixed loop design.
- Q235A steel and ABS plastic cover, 1.8mm cable diameter ,length 180mm .
- Average pull apart force is 200KG.
- Customer name/logo can be printed by hot foil or laser tech.

• Color



## SPECIAL REQUIRED

- Customized wire length is available. PACKING:
- Packaging:1000pcs/Carton
- Carton Dimensions: 325X210X215mm
- G.W : 17KG
- N.W : 16KG



# Cable Seal

Model: GS002

## SPECIFICATIONS:

- ISO 17712 complaint; Each seal conforms to a pull tight design.
- Zinc die lock system and ABS plastic cover, 1.8mm cable diameter, length 200mm.
- Average pull apart force is 400KG.
- Customer name/logo can be printed by hot foil or laser tech.
- Color

## SPECIAL REQUIREMENTS

- Customized wire length is available. PACKING:
- Packaging: 1000 pcs/Carton
- Carton Dimensions: 325X210X215mm
- G.W : 17KG
- N.W : 16KG



# Clip Seal

## Model: Clip Seal

### SPECIFICATIONS:

- Breakpoint at fold improves tamper resistance
- Three different slit sizes allows string or wire to be used
- Customer name/logo for clear identification and supports image/branding
- Numbered version:
- Mats of 10 seals allows sequential distribution

### PACKING:

- 50pcs per box / 5000pcs per carton
- Net weight: 10kgs
- Gross weight: 13.5kgs
- Measure:420\*410\*450mm



# Double Lock Ball Seal

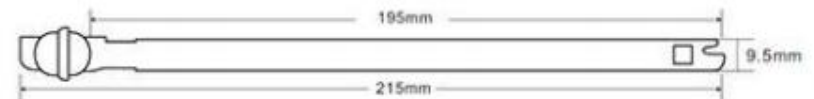
## Model: Ball Seal

### SPECIFICATIONS:

- Double lock ring improves tamper resistance
- Customer name/logo for clear identification and supports image/branding
- Numbered version:

### PACKING:

- 100pcs per bag / 1000pcs per carton
- Net weight: 6.6kgs
- Gross weight: 7.5kgs
- Measure: 350\*260\*250mm



# PadLok Seal

## Model: Padlok 801

PadLock seal provides a low cost, highly secure, single use alternative to conventional padlocks. it has advanced metal locking mechanisms and it meets UK customs requirement.

### SPECIFICATIONS:

- This range of padlock security seal meets UK & US customs requirement
- Manufactured in high grade polypropylene with a chromed steel hasp . Strength 30kg/66lbs.
- Print Hot foil or laser Name/logo and serial number
- Color

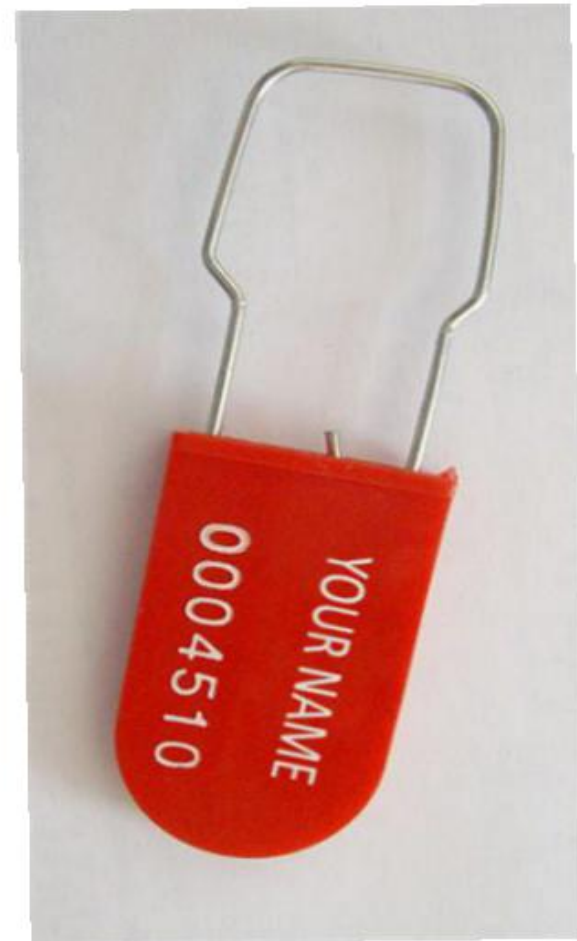


### DIMENSIONS

- House: 21x37x6mm

### PACKING:

- Packaging: 2000pcs/Carton
- Carton Dimensions: 405X245X230mm
- G.W : 14KG
- N.W : 13KG



# PadLok Seal

## Model: Clilok 821

Click lock seal is specially designed for easy, fast and one-handed application. It's constructed of welded polypropylene with an cap locking insert.

### SPECIFICATIONS:

- Applied by one hand .
- Easy removal by hand without using a cutting tool.
- Ease of application reduces sealing time and increases efficiency Material Polypropylene Strength 15KG.
- Print Hot foil or laser Name/logo and serial number
- Color



### DIMENSIONS

- House: 24.5x37mm

### PACKING:

- Packaging: 1000pcs/Carton
- Carton Dimensions: 340X220X235mm
- G.W : 3.0KG
- N.W : 2.5KG

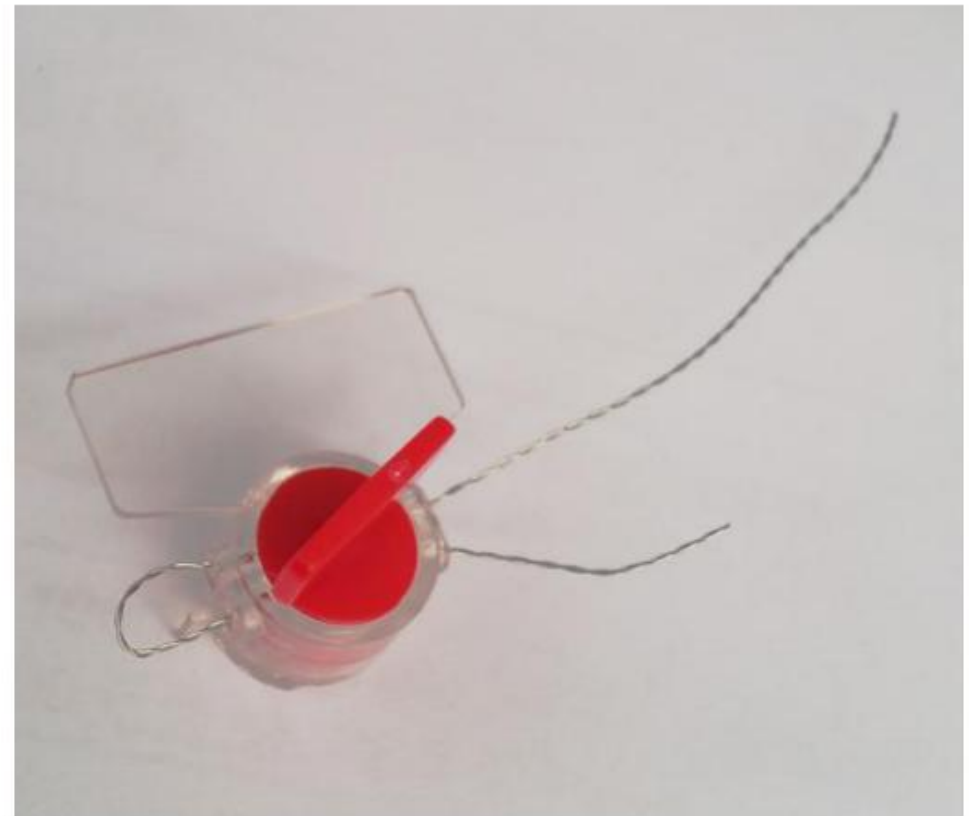


# Roto Seal

## Model: Roto Seal

### SPECIFICATIONS:

- Sequential numeration, engraved on body of the seal and locking mechanism
- Additional seal labelling: glows under UV, glows only anchor, glows only body, luminescent glow in the dark
- Suitable temperature: between - 40 and 80 C.
- Blocking wire diameter: between 0,65 and 0,1mm.
- It is essential to cut protruding wire ends after sealing
- Locking mechanism has four locks in one row
- Roto of the seal cannot be extracted
- Color



### PACKING:

- 100pcs per inner bag / 1000pcs per bag ,
- 5000pcs a box
- Net weight:12kgs
- Gross weight:17kgs
- Measure:500\*400\*28mm

# Anchor Seal

## Model: Anchor Seal

### SPECIFICATIONS:

- Sequential numeration, engraved on body of the seal and locking mechanism
- Additional seal labelling: glows under UV, glows only anchor, glows only body, luminescent glow in the dark
- Suitable temperature: between - 40 and 80 C.
- Blocking wire diameter: between 0,65 and 0,1mm.
- It is essential to cut protruding wire ends after sealing
- Locking mechanism has four locks in one row
- Anchor of the seal cannot be extracted
- Color



### PACKING:

- 250pcs per box / 10000pcs per carton
- Net weight:25.5kgs
- Gross weight:26.5kgs
- Measure:420\*485\*430mm

